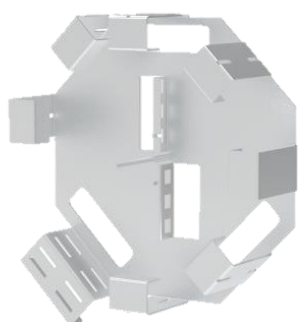


## SUS-W series

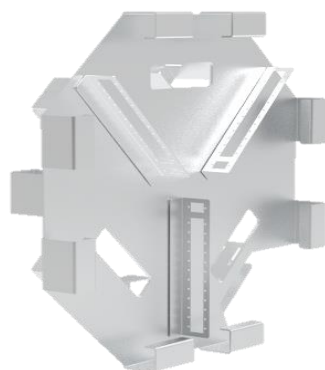
SUS-W series optical fibre post is designed for outdoor installations made in single-family housing. It is available in two versions: 6 or 36 commutation fields



SUS-W Fibre Optic Pole for installation in external family housing



Fiber optic post insert  
SUS-W-PK6



Fiber optic post insert  
SUS-W-PK36

### main features:

- capacity of up to 48 DAC cables with diameter 6mm,
- up to 96 splices possible,
- cable storage chambers exclude the need to build a cable chamber,
- removable module for storing fibre optic cassettes, tubes of cables, pigtailed together with commutation field adapters
- possibility of comfortable welding on a table or in a service technician's car,
- door closed with a patent lock limiting access for unauthorised persons.

### kit includes:

- cable ties,
- round cable culvert,
- galvanised charging unit SUS-W-PK-36 or SUS-W-PK-6 according to configuration,
- 2 SK-24-FCA splice trays and protective cover SK-24-FCA-COVER,
- cable holder SUS-W-LM,
- plinth - plastic,
- system lock with a key,
- fixing elements.

### options ordered separately:

- adaptery,
- pigtaile światłowodowe
- kable abonenckie typu DAC,
- mikrokable i mikrorurki,
- uchwyt do zamocowania kabli SUS-W-LM,
- termokurczliwe osłonki spawów OS-45-2,4-OP,
- dodatkowy przepust kablowy PSG-65,
- dodatkowe kasety SK-24-FCA.

### norms/certificates:

- EN 60529 / IEC 529
- EN 61300-2-22
- EN 50102
- flammability class V0 to UL94
- degree of protection IP54
- mechanical resistance class IK10

## SUS-W series

### technical specifications:

| GO-SUS-W-                            |        | 6-SC-2K9   | 36-SC-2K9 |
|--------------------------------------|--------|--|-----------|
| dimensions (W x H x D) [mm]          |        | 400 x 1320 x 245 (with foundation)               |           |
| number of commutation fields         |        | 6  | 36        |
| max. number of welds                 |        | 96   |           |
| cassette type   covers               |        | SK-24-FCA   SK-24-FCA-COVER                      |           |
| cassette capacity                    |        | 24   |           |
| max. number of fibre optic cassettes |        | 6  |           |
| max. number of DAC cables            |        | 48   |           |
| maximum supply of DAC cables         | 24     | up to 5 m  |           |
|                                      | 30     | up to 4 m  |           |
|                                      | 48     | up to 2,5 m                                      |           |
| mid-span implementation possibility  |        | yes  |           |
| Cable bending radius                 | G.657A | 15cm   |           |
|                                      | G.652D | 30cm   |           |
| plinth burying depth [cm]            |        | 65   |           |
| IP degree of protection              |        | IP 54  |           |
| UV resistance                        |        | yes  |           |
| IK degree of protection              |        | IK 10  |           |
| material                             |        | RAL 7035 thermoset glass fibre, galvanised steel |           |
| weight [kg]                          |        | ~7*  |           |

### ordering:

GO-SUS-W-36-24SCA-CO2T-24A1-CO2-2K9 - Complete optical fibre pole 36xSC, 24 SC/APC adapters, 24 G657A1 pigtails, IP54, IK10, ABS, RAL7035. Dimensions: 400x1320x245mm (WxWxH), lock 1333, 2 cassettes with cover