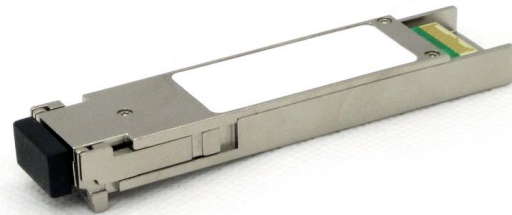


## Single fiber WDM

Hotswap transceiver XFP designed for use in transmission devices connected using multimode and singlemode optical fibers

### features:

- Transmit-receive system,
- Dedicated laser transmitter,
- Broadband receiver,
- DDM module enabling measuring and reading basic Performance Monitoring data,
- Compatibility with management system (compatibility with devices incl. Cisco, Juniper, Huawei).



Transceiver XFP WDM

### standards and certificates:

- ROHS – Directive UE 2011/65/EU
- EMC - Directive UE 2014/30/EU (EN61000-3-2:2014)
- XFP MSA.

### sectors:



### technical specifications:

	10 km TX 1270nm	10 km TX 1330nm	20 km TX 1270nm	20 km TX 1330nm
Transceiver description	Optical	Optical	Optical	Optical
Transceiver type	XFP	XFP	XFP	XFP
Throughput [Gbit/s]	10	10	10	10
Service	10 GbE	10 GbE	10 GbE	10 GbE
Typical reach [km]	10	10	20	20
Transmitted wavelengths [nm]	1260-1280	1320-1340	1260-1280	1320-1340
Transmitted power[dBm]	-5 – 0	-5 – 0	-2 – 2	-2 – 2
Received wavelengths [nm]	1320-1340	1260-1280	1320-1340	1260-1280
Receiver sensitivity <sup>1</sup> [dBm]	-14	-14	-14	-14
Connector type	LC simplex	LC simplex	LC simplex	LC simplex
Operating temperature range [°C]	0 - 70	0 - 70	0 - 70	0 - 70
DDMI	Yes	Yes	Yes	Yes

<sup>1</sup>Provides BER @ 10<sup>-12</sup>, without margin

## Single fiber WDM

### technical specifications:

	40 km TX 1270nm	40 km TX 1330nm	60 km TX 1270nm	60 km TX 1330nm
Transceiver description	Optical	Optical	Optical	Optical
Transceiver type	XFP	XFP	XFP	XFP
Throughput [Gbit/s]	10	10	10	10
Service	10 GbE	10 GbE	10 GbE	10 GbE
Typical reach [km]	40	40	60	60
Transmitted wavelengths [nm]	1260-1280	1320-1340	1260-1280	1320-1340
Transmitted power[dBm]	0 – 4	0 – 4	2 – 7	2 – 7
Received wavelengths [nm]	1320-1340	1260-1280	1320-1340	1260-1280
Receiver sensitivity <sup>1</sup> [dBm]	-14	-14	-20	-20
Connector type	LC simplex	LC simplex	LC simplex	LC simplex
Operating temperature range [°C]	0 - 70	0 - 70	0 - 70	0 - 70
DDMI	Yes	Yes	Yes	Yes

<sup>1</sup>Provides BER @ 10<sup>-12</sup>, without margin